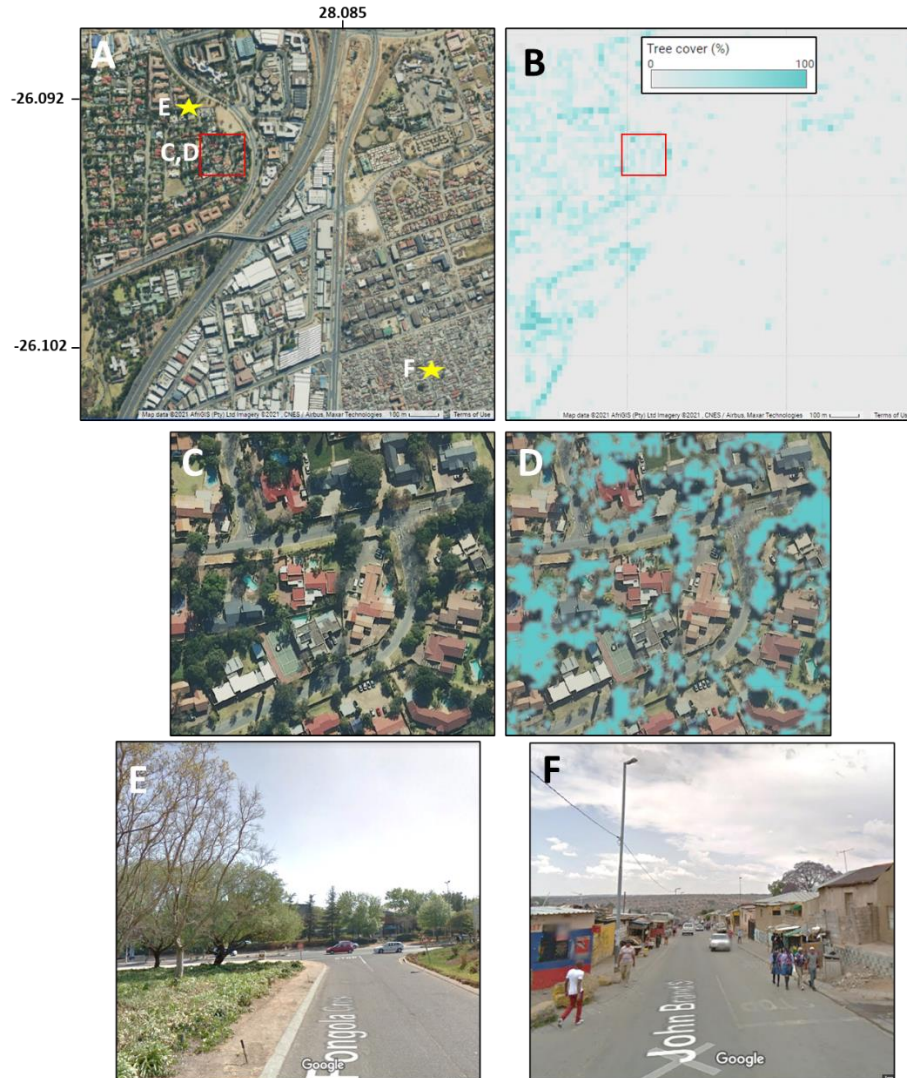


## Supplementary figures



**Figure S1.** An example of fractional tree cover mapped using machine learning, orthophotos and satellite imagery over Johannesburg. The area depicted covers an increasing tree cover gradient from south-east (Alexandra) to north-west (Sandton). Panel A shows a Google satellite image of the area while B shows fractional tree cover aggregated to a 20x20m grid. C and D show a zoomed extent of an area identified with a red box in A and B. E and F show street-view images, representative of the neighborhood, at locations marked with a star in A. Image E is in Sandton with annual average crime rates for violent, sexual and property crimes of 504, 81 and 1702 crimes per 100,000 citizens, respectively. Image F is in Alexandra with annual average crime rates for violent, sexual and property crimes of 860, 39 and 353 crimes per 100,000 citizens, respectively.