



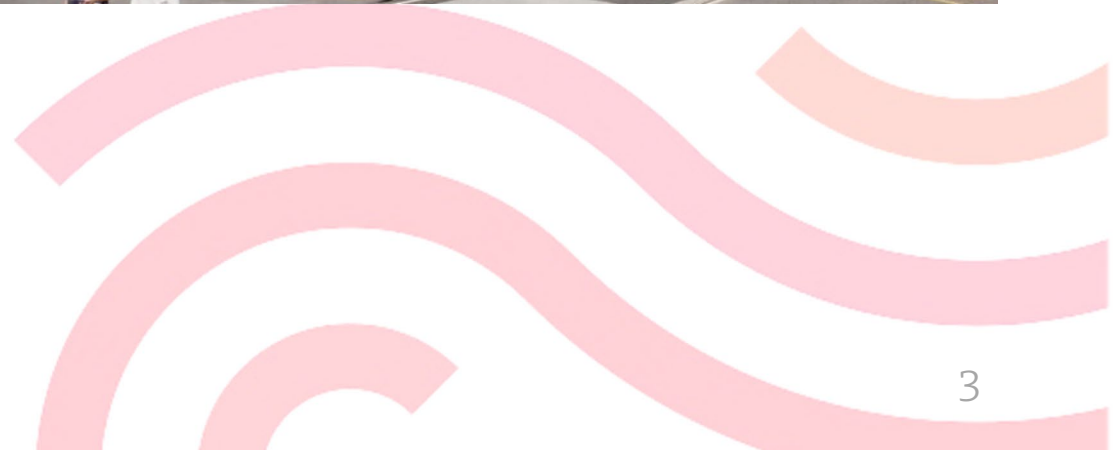
# Mario Branda

Sindaco



## Investimenti della Città

- Acquisto stabile Via Vela: **6 milioni**
- Interventi di rinnovo sullo stabile: **1.1 + 2 milioni**
- Realizzazione nuova sede IRB: **10 milioni**
- Finanziamento avvio attività ricerca: **2.8 milioni**
- Contributo alla locazione dell'IRB  
prima del contributo per la nuova sede: **10 milioni**







# **Simone Gianini**

Vicesindaco, capo-dicastero Territorio e mobilità

A topographic map of the Alps region, showing mountain ranges, valleys, and lakes. The map is color-coded by elevation, with green for lower elevations and white for higher elevations. Three locations are marked: Zurigo (white dot), Bellinzona (red pin with 'A'), and Milano (white dot).

● ZURIGO

● A **BELLINZONA**

● MILANO



LOCARNO ●



BELLINZONA

LUGANO ●



**Bellinzona FFS**

**Giubiasco FFS**





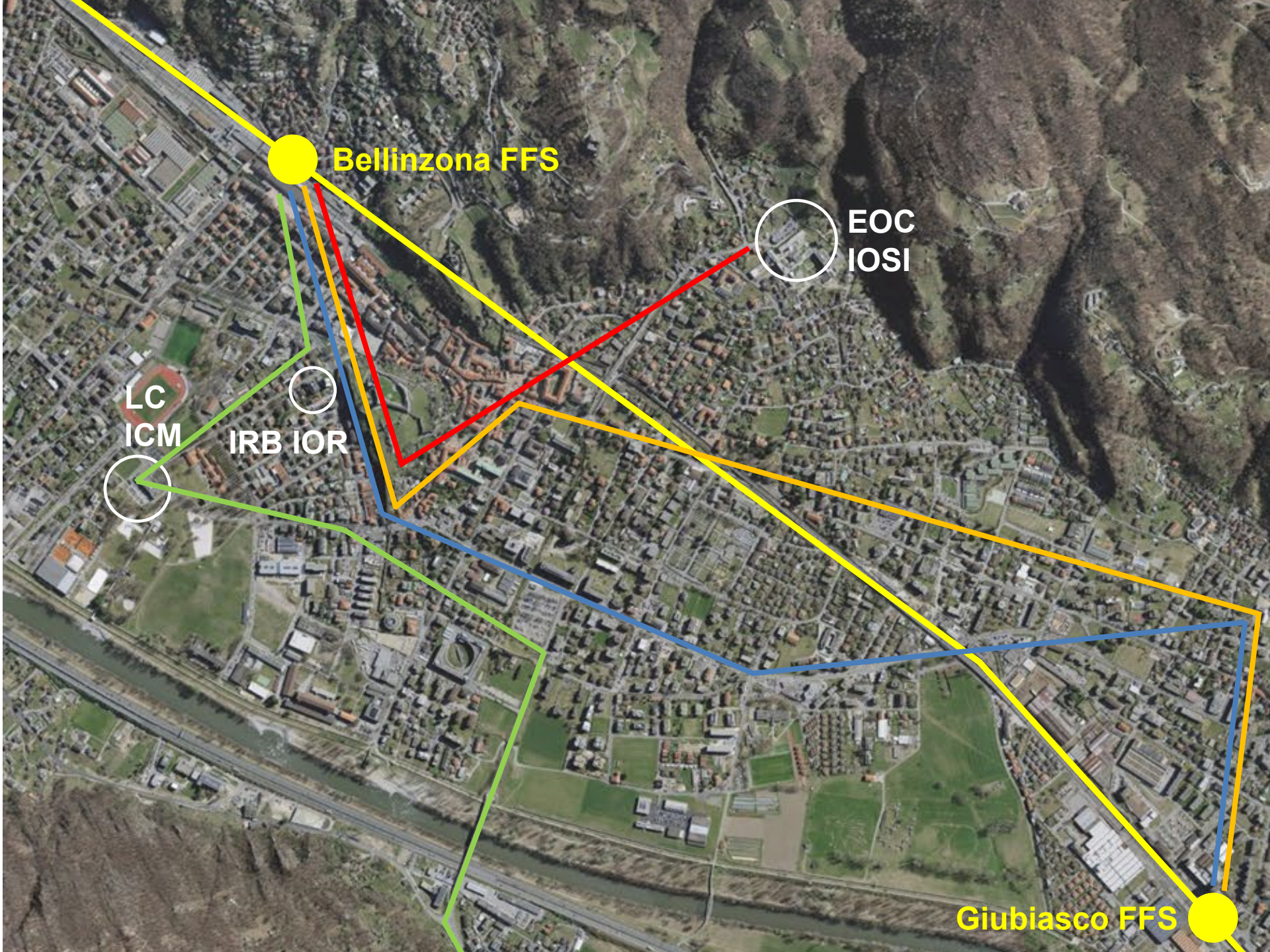
**Bellinzona FFS**

EOC  
IOSI

LC  
ICM

IRB IOR

**Giubiasco FFS**



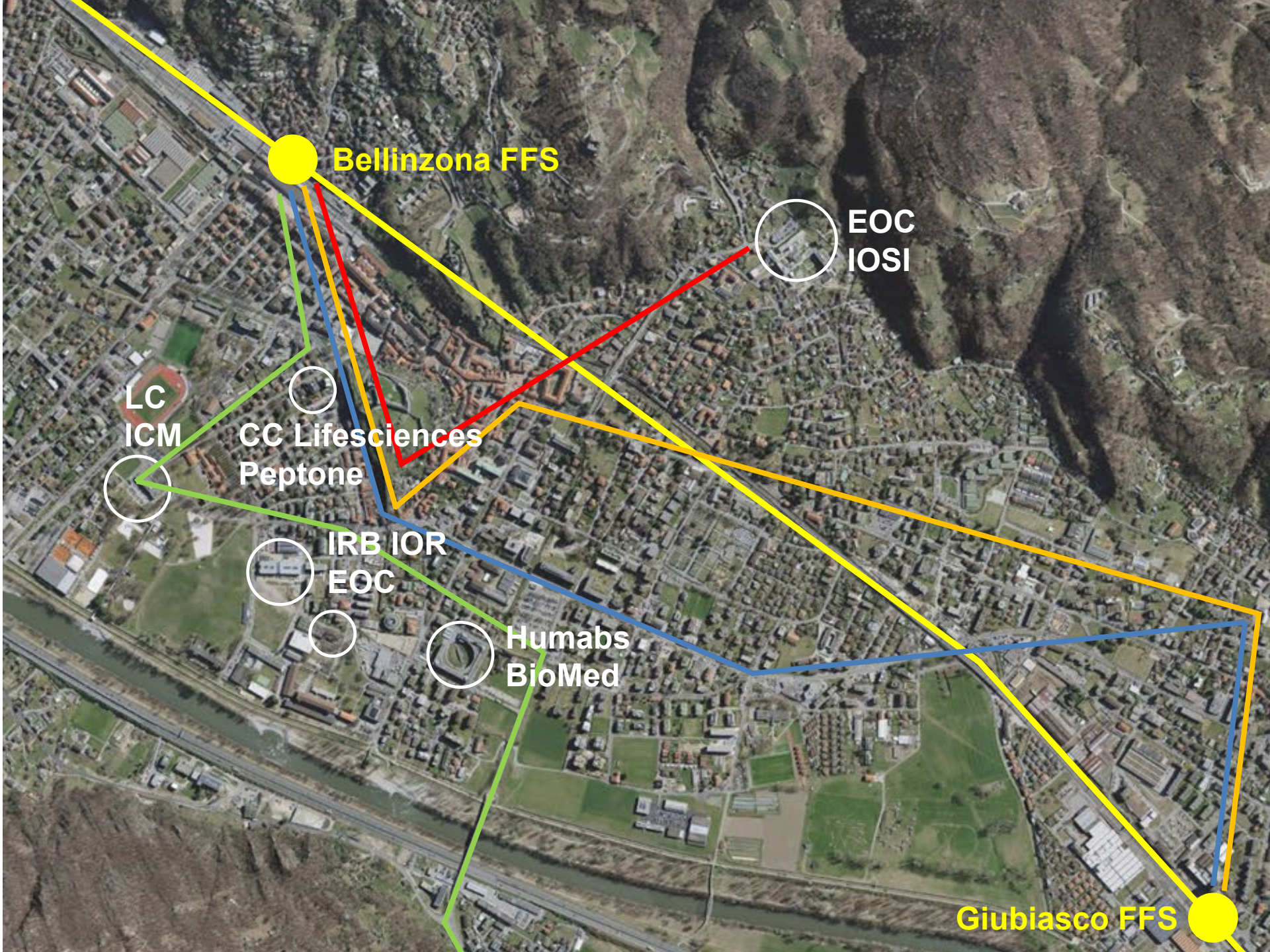
**Bellinzona FFS**

EOC  
IOSI

LC  
ICM

IRB IOR

**Giubiasco FFS**



**Bellinzona FFS**

EOC  
IOSI

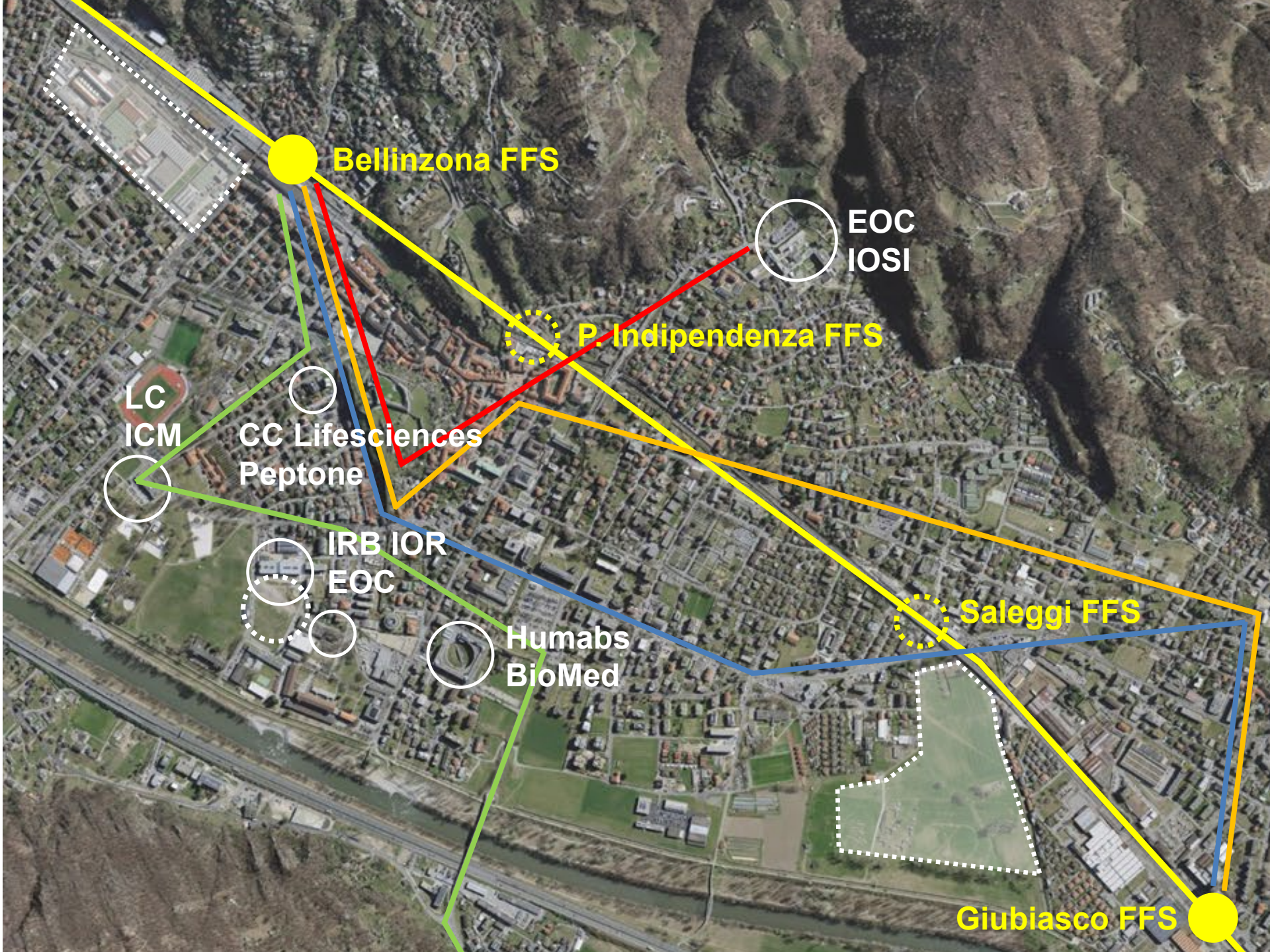
LC  
ICM

CC Lifesciences  
Peptone

IRB IOR  
EOC

Humabs  
BioMed

**Giubiasco FFS**



**Bellinzona FFS**

EOC  
IOSI

**P. Indipendenza FFS**

LC  
ICM

CC Lifesciences  
Peptone

IRB IOR  
EOC

Humabs  
BioMed

**Saleggi FFS**

**Giubiasco FFS**





Parco dell'innovazione,  
attività formative superiori  
e uffici amministrativi